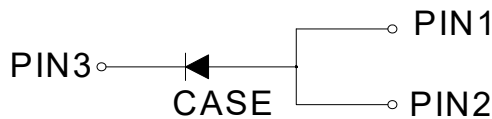
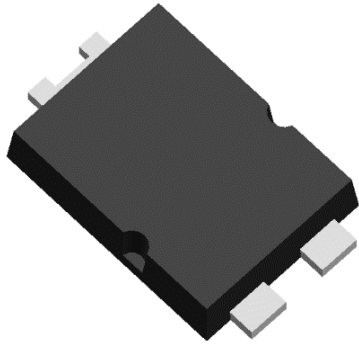


Schottky Rectifier



Features

- Ideal for automated placement
- Low power losses
- High forward surge capability
- Meets MSL level1, per J-STD-020, LF maximum peak of 260 °C
- Part no. with suffix "Q" means AEC-Q101 qualified

Typical Applications

For use in lighting, fast switching rectification of power suppliers, inverters, converters, and freewheeling diodes for consumer, and telecommunication.

Mechanical Data

- **Package:** TO-277
Molding compound meets UL 94 V-0 flammability rating, RoHS-compliant, Halogen free
- **Terminals:** Tin plated leads, solderable per J-STD-002 and JESD22-B102

■ Maximum Ratings (T_a=25°C Unless otherwise specified)

PARAMETER	SYMBOL	UNIT	SS5U150PQ	SS5U200PQ
Device marking code			SS5U150P	SS5U200P
Repetitive Peak Reverse Voltage	V _{RRM}	V	150	200
Maximum average forward rectified current at T _c (Fig.1)	I _O	A	5	
Forward Surge Current (Non-repetitive) @60Hz Half-sine wave, 1 cycle, T _a =25°C	I _{FSM}	A	160	
Current Squared Time @1ms≤t≤8.3ms T _j =25°C	I ² t	A ² s	106	
Storage Temperature	T _{stg}	°C	-55 ~+175	
Junction Temperature	T _J	°C	-55 ~+175	

■ Electrical Characteristics (T_a=25°C Unless otherwise specified)

PARAMETER	SYMBOL	UNIT	TEST CONDITIONS	Min	Typ	Max
Peak Forward Voltage	V _{FM}	V	I _{FM} =5A, T _J =25°C	-	0.80	0.9
			I _{FM} =5A, T _J =125°C	-	0.67	0.8
Leakage Current	I _R	uA	V _R =200V, T _J =25°C	-	0.023	1
			V _R =200V, T _J =125°C	-	28	150
Typical junction capacitance	C _J	pF	V _R =4V, f=1 MHz	-	100	-



SS5U150PQ THRU SS5U200PQ

■ Thermal Characteristics

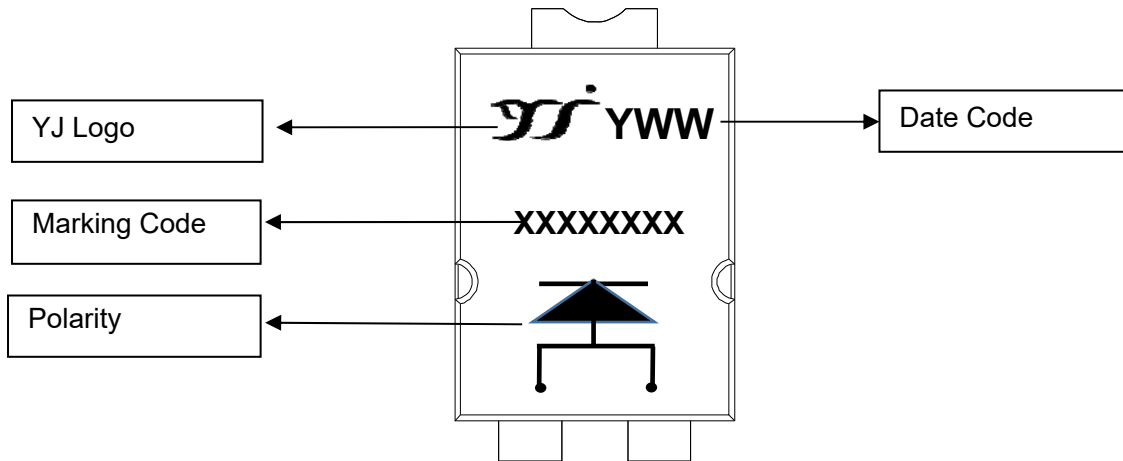
PARAMETER	SYMBOL	UNIT	SS5U150PQ/SS5U200PQ
Typical Thermal Resistance	$R_{\theta J-A}$	$^{\circ}C/W$	121
	$R_{\theta J-C}$		14
	$R_{\theta J-L}$		22

Note:
 (1) Thermal resistance from junction to ambient and from junction to case and from junction to lead mounted on P.C.B with 10mm*10mm copper pad areas.

■ Ordering Information (Example)

PREFERED P/N	PACKAGE CODE	UNIT WEIGHT(g)	MINIMUM PACKAGE(pcs)	OUTER CARTON QUANTITY(pcs)	DELIVERY MODE
SS5U150PQ SS5U200PQ	F1	Approximate 0.106	5000	80000	13" reel

■ Marking Information



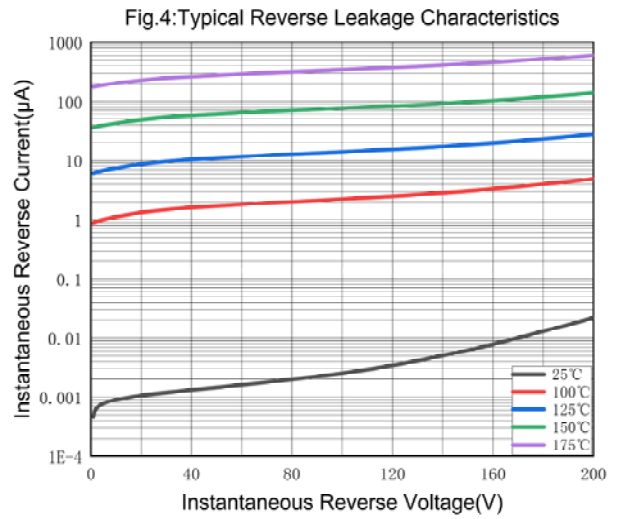
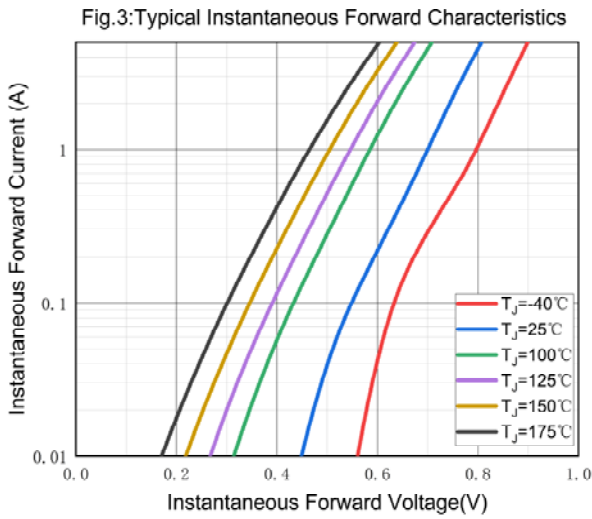
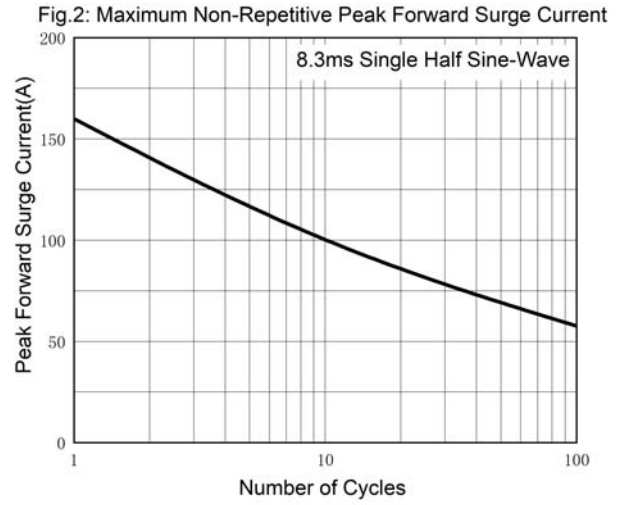
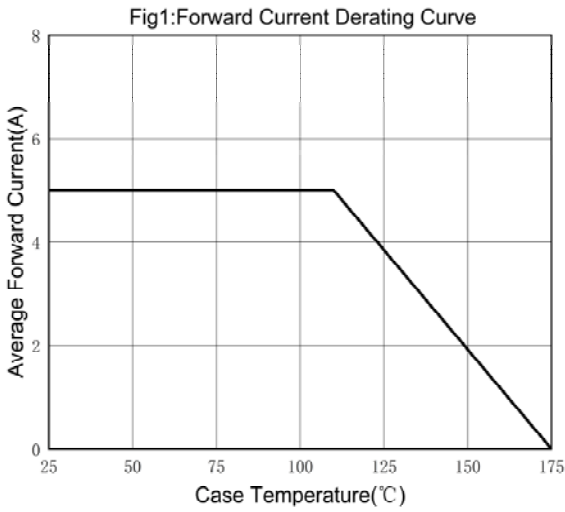
Note:

1. All marking is at middle of the product body
2. All marking is in laser printing
3. XXXXXX is marking code, like SS5U150P
4. Body color: Black
5. YWW is date code, "Y" is year. "WW" is week.
For instance: The 15th week of 2019, date code is 915



SS5U150PQ THRU SS5U200PQ

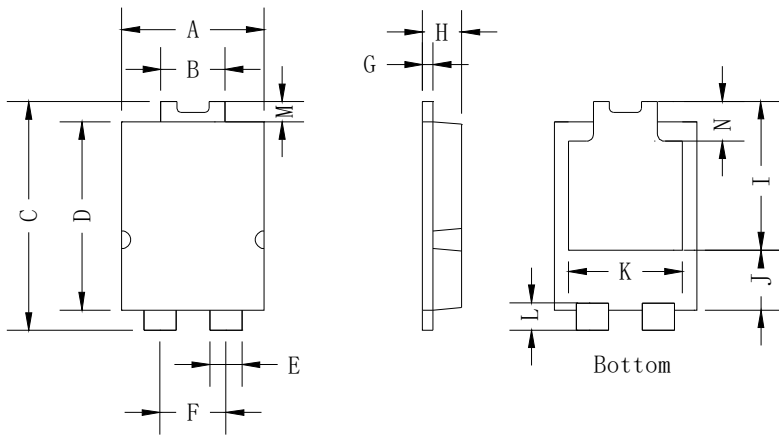
■ Characteristics (Typical)





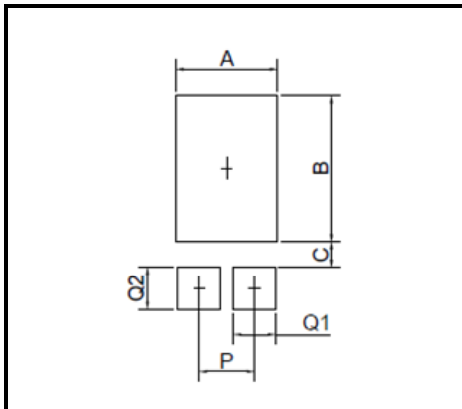
SS5U150PQ THRU SS5U200PQ

■ Outline Dimensions



DIM	mm	
	MIN.	MAX.
A	3.90	4.10
B	1.70	1.90
C	6.40	6.60
D	5.30	5.50
E	0.80	1.00
F	1.85 ref.	
G	0.35	0.45
H	1.10	1.20
I	4.10	4.50
J	1.50	1.90
K	2.90	3.40
L	0.55	0.75
M	0.50 ref.	
N	1.15 ref.	

■ Suggested pad layout



DIM	MIN.(mm)
A	3.36
B	4.86
C	0.85
P	1.84
Q1	1.40
Q2	1.40



SS5U150PQ THRU SS5U200PQ

Disclaimer

The information presented in this document is for reference only. Yangzhou Yangjie Electronic Technology Co., Ltd. reserves the right to make changes without notice for the specification of the products displayed herein to improve reliability, function or design or otherwise.

The product listed herein is designed to be used with automotive electronics, are not designed for use in medical, life-saving, lifesustaining, or military, Yangjie or anyone on its behalf, assumes no responsibility or liability for any damages resulting from such improper use of sale.

This publication supersedes & replaces all information previously supplied. For additional information, please visit our website [http:// www.21yangjie.com](http://www.21yangjie.com) , or consult your nearest Yangjie's sales office for further assistance.